

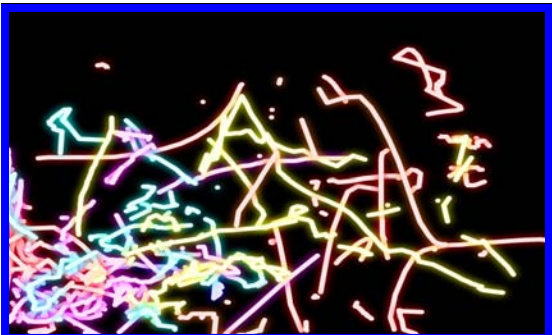


The Professional Center
for Child Development

"Apps" for Early Childhood on the iPad

By: Kim Winters, M.Ed., Developmental Specialist

The iPad and iPod Touch are among the latest trends in technology. Many of the families we work with at The Professional Center for Child Development have told us their children are interested in playing with these and have asked what apps might be appropriate for them to use. Apps (short for software "applications") are downloaded to the iPad from iTunes (you must have an iTunes account set up first). Apps are sorted in iTunes by category. Categories include books, education, entertainment, music and games, among others. Prices of apps range from free to very expensive; many are \$0.99-\$1.99. Of the 200+ apps on the iPads owned by the Regional Consultation Program at PCCD, less than 10 of them were paid for, the rest were free.



Picture (above) made by a 24 month old in Early Intervention using the free app *Glow Draw*. Due to physical limitations this was the first time she had ever been able to make a picture for her mom.

Good early childhood apps are engaging and may teach cause and effect, simple vocabulary and early learning concepts; have fun music or familiar characters; or read a story. Some of my favorite apps are *Elmo's Monster Maker*, *Cookie Doodle*, *Peekaboo Barn*, *Glow Draw*, *AlphaBaby Free*, *Eensy Weensy Web Harp*, *Toy Story* and apps by developer Duck Duck Moose such as *Wheels on the Bus*, *Itsy Bitsy Spider*, *Fish School* and *Old MacDonald*. To find other apps

take your time exploring iTunes and read reviews posted by people who have downloaded an app you are considering. Ask friends which apps they have downloaded and liked. Check out www.momswithapps.com for reviews of apps from other parents, every Friday they give away free apps. Be on the lookout for "lite" versions of apps, these give you the opportunity to try a free version of the app (perhaps with reduced content) before committing to spending the full price.

Continued on page 3

978-475-3806
www.TheProfessionalCenter.org

32 Osgood Street,
Andover, MA 01810
and

130 Parker Street,
Lawrence, MA 01843

Winter 2010—2011
Volume 14, Issue 4

Programs at the PCCD

- ◆ Early Intervention
- ◆ Developmental Day School
- ◆ Two-by-Two & EI play groups
- ◆ Regional Consultation Program
- ◆ Private Therapy Program / Preschool

Inside this issue:

| | |
|--------------------|---|
| A Note from Veryl | 2 |
| RCP News | 3 |
| Staff Spotlight | 4 |
| Two-by-Two | 5 |
| LacyMae's Story | 6 |
| Early Intervention | 7 |
| New "Developments" | 8 |

LIMITLESS OPPORTUNITIES IN THE DEVELOPMENTAL DAY SCHOOL

Children ages 3 through 7 who have health care needs—Call Today!

From The Desk of The Executive Director

The fall season was busy and exciting here at the Center. Our playground, surrounded by trees and colorful leaves was a hub of activity for all of our programs. The warmer than usual weather was a big help and everyone enjoyed the extra outdoor fun. We welcomed several new families as the older children moved on to new places.

Our annual Trot for Tots was a great success. We had more runners and walkers than ever before, and we met our fundraising goals. We will continue to schedule the event at the earlier time in the fall to take advantage of the nicer weather. The Trot will continue to be a formal 5 K Run as well as a Walk. Our plans include the costume parade, and of course our cook out. Please plan to join us again next year.

We have welcomed some new staff in Early Intervention and our Day School. All our programs are continuing to enroll new children, and we have some openings in our Day School. If you know of any families who may be new to the area or need our services and expertise, please encourage them to call, and we will try to help them. We are always happy to give tours and answer questions.

The Center hosted the Massachusetts Association of Approved Private Schools (MAAPS) and Suffolk University Certificate in Leadership Graduate Program for the Fall Semester. The program was a great success and did not appear to disrupt our programming.

We recently honored some retiring Board of Directors members at our Annual Meeting. Louise Borke served on the Board for 19 years. She held the offices of Chairman, Vice Chairman, and Clerk during her tenure. Linda Sweeney also retired after four years of service. She held the office of Clerk for three years. I am very thankful to them for volunteering their time and considerable talents to help the Center.

We also honored several of our staff for their years of service:

| | |
|--------------------|------------|
| Cathy Heseltine | 29 + years |
| Cheryl Bruk | 20 years |
| Shelby Balukonis | 20 years |
| Rachel Daniels | 10 years |
| Mary Ellen Langdon | 10 years |
| Carolyn Priem | 5 years |
| Leslie Siciliano | 5 years |

Our December Holiday Party, held at West Parish Church, was well attended and fun. There were several high school volunteers who helped the children with the activities and the "sing along" portion of the morning.

The Day School presented a wonderful play titled "The Mitten" in December. The children helped with the set decorations, costumes, and showed their emerging acting talents using assistive technology. Priscilla Bartle narrated the story and played the part of Baba, the grandmother of the little boy in the story.

Please save the date for our Swing into Spring Gala. We will be holding the event at the Andover Country Club on Friday, April 29, 2011. It will be a nice way to welcome the Spring Season and reconnect with friends and families. Please stay tuned for future announcements.

Veryl D. Anderson, RN
Executive Director



Looking at the pictures
is an
important
early
reading skill

An illustration of a young girl with dark hair, wearing a green and yellow striped shirt, sitting and reading a book.

Attention parents of children who have medical care needs... Come and talk with other parents dealing with similar issues.

Do you have many doctors appointments? Do you spend time at the hospital? Feel free to bring your children. 3 dates are set—Fridays, March 4, April 8, and May 6. 10:30 in the morning at the Andover Center
RSVP to Vivian ext. 242 or Ellen ext. 217

IPad - from page 1



The iPad may also be used as an augmentative and alternative communication (AAC) device. There are several apps designed for this purpose: *TapToTalk*, *iCommunicate*, *MyTalk*, and *Proloquo2Go* to name a few. If you are interested in learning more about using the iPad as an AAC device, ask your service coordinator about a consultation with a member of the Augmentative and Alternative Communication evaluation team from PCCD. The Regional Consultation Program at PCCD will be hosting a workshop, *Having Fun with iPad Apps*, on Friday, March 11th, be on the lookout for registration details soon!

RCP News

By: Vivian Burton, RN MSN CEIS

The Regional Consultation Program of the Northeast

We continue to be the largest of the six RCPs in the Commonwealth. Our services are expanding especially with Augmentative and Alternative Communication Evaluations. We are offering feedback visits four to six months after initial evaluations. At that time, the team can discuss how things are going at home/pre-school or progressing with an Assistive Technology device. Sometimes things might not be working out and the team and the family can try to adapt AT devices or the strategies originally recommended. Please remember that if your child gets bored with an adapted toy or doesn't like the one that was loaned, you can always return it and get another one at our Andover office. Just make sure to call first!

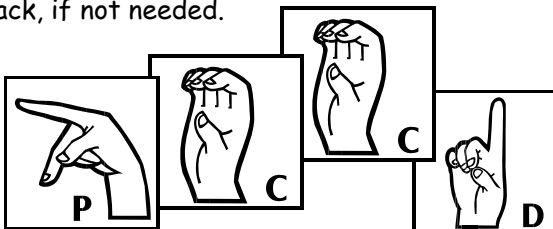
Our training calendar has been full. We provided workshops in Sign Language twice in the fall. The RCP also presented a Behavior workshop for parents, educators, and EI staff. All of our trainings have been full.

Trainings/workshops that are coming are as follows:

- ◆ February 15 at 4 PM - introduction to communication devices such as switches, adapted toys and other talking devices
- ◆ March 11 at 3 PM - Using the iPad/iPod with children. Owning an iPad or iPod is not necessary.
- ◆ March and again in May 2011—Baby signs (sign language) will be offered
- ◆ The Northeast RCP will present a Feeding workshop that goes beyond Picky Eating. This workshop will be in the spring, no date as of yet.

All of our workshops are free to EI families and EI staff. Registration is required. The ones mentioned above will be at the PCCD, Andover site. Please call the RCP office or contact your EI service coordinator/team to register. You can also email at rcp@theprofessionalcenter.org.

Please remember that if your child is turning three or no longer needs equipment or devices that are on loan, you may drop them off at the Andover site or contact your EI service coordinator to make other arrangements. There are many children waiting for equipment and if it is taking up space in your home, we would love to have it back, if not needed.



We in the RCP team wish you all a Happy New Year and thank you for your support of our program.

Staff Spotlight



Name: Mary Moossa-Jurek, M.Ed.
Education: Pingree School, Merrimack College, and Lesley University
Position: Teacher of Special Education — PCCD Developmental Day School
Years at the PCCD: Started as a PCCD volunteer in the late 90s, was an assistant teacher in our EI program, and was inspired to get her masters in Special Education and is now the lead teacher in a Developmental Day School classroom.

Thoughts about working at the PCCD:
"I just love coming to work every day. It is an honor and privilege to teach the students and work with the families in the day school" She goes on to say... "I feel blessed to be surrounded by such dedicated, devoted and spirited staff. I also would like to take this opportunity to thank my friends and family for the support and love they have given me throughout the years."
Mary has 3 beautiful girls (one of whom has a rare mitochondrial disorder) and a spunky Lab Sadie.

Name: Lisa Kwiatkowski
Education: Sanborn Regional High School
Position: Medical Billing Supervisor
Years at the PCCD: 13 years
Thoughts about working at the PCCD:
"I have been an employee of the Professional Center for over 13 wonderful years. I am one of the few truly blessed people who get up every day and enjoy going to work. The caring compassion and professionalism here at The Center surpass any place I have worked previously and make it a truly great place to be."
Lisa is the proud mother of 2 boys

Name: Carolyn Priem, PT
Education: Northeastern University
Position: Physical Therapist in EI
Years at the PCCD: 5 years
Thoughts about working at the PCCD:

"I was "introduced" to PCCD when I was in college. I was assigned to do a 5 week clinical affiliation there in 1989. I loved the staff there and the children that I worked with truly had an impact on my life and my deciding to come back to Pediatrics. After I graduated, I lived in Maryland and Philadelphia and worked as a PT with individuals who had suffered traumatic head injuries. I loved my work but after marriage, twins and a third baby, I decided to stay home with my kids. When my youngest entered 3rd grade I decided to re-enter the work force. I can't tell you how thrilled I was to see that the PCCD was looking for a PT in their EIP. I was even more thrilled to see so many of the familiar faces I had met all those years ago were still there. I have now been at The Center for 5 years and I feel blessed to be surrounded by such supportive co-workers and supervisors. The children and the families that I work and have worked with are a source of inspiration to me and for that I am forever grateful! My own children have been involved in the many of The Center's activities as volunteers and my daughter is possibly thinking of a career as a PT!!"
Carolyn is married and has 3 wonderful kids and 2 perky Labradoodles.

The PCCD thanks you for adopting a gingerbread boy or girl



Your donation during the holiday season was greatly appreciated by the staff at the Professional Center for Child Development. We will use everything in the Preschool, Two-by-Two classes and in the Developmental Day School.

Thank you for thinking of us!

Two-by-Two & Early Intervention Group News

We have had a wonderful fall session in our 2x2 groups, filled with fun activities both indoors and out on the playground. In the classrooms, our curriculum included fall art projects, many farm activities, and all the cars and trucks you could ever want to play with! Each day, our classrooms offer the following areas: books, kitchen play, sensory exploration, table games and manipulatives, art projects with a variety of materials, as well as toys set up on the floor. The children are very busy during our free play time!

For those of our newer families, we wanted to make you aware of the integration that is occurring all the time in our 2x2 groups. The philosophy of The Professional Center is to serve children of all abilities, so with that goal in mind, we are so happy to welcome some of our Developmental Day School friends into our groups. The students often join us for circle, sharing the puppets and other toys as we sing and have fun together. We also see the Day School children outside on the playground or in the gross motor rooms. The playground was designed to support this philosophy as well, so the swings (including one that is appropriate for wheelchairs), the sensory garden, walking paths, and standing panels can be used by all children.

The benefits of this inclusion are many; children that have positive inclusion experiences at a young age can carry this forward to their future schools. They will know that despite the differences among people, we are more alike in many ways. What a wonderful lesson to take away when you are only two or three years old! Things such as handicapped bathrooms, wheelchair ramps, and other accommodations will certainly be familiar and natural to them as they grow up.

Thank you for sharing your children with us. We are looking forward to the winter session with many of our current children and families.

Melanie Shipon, M.Ed.—Community Group Coordinator

Aimee Phleger, BS, CEIS— EI Educational Coordinator



LIMITLESS OPPORTUNITIES IN THE DAY SCHOOL

The Developmental Day School offers educational, medical, therapeutic and social services to families whose children ages 3 through 7 are experiencing developmental delays, complex health care needs, physical disabilities and communication or sensory disorders.

Do you know a child who would benefit from the Day School?

- children with moderate to severe delays
- children with complex health care needs
- children with physical disabilities
- children with assistive technology needs

The Day School is licensed by the Massachusetts Department of Education.



PCCD's school play based on "The Mitten" by Jan Brett. was well received by a standing room only audience on December 16th. Leah (pictured left) was one of the students using a communication device to say her lines. In the photo, you can see Leah with a switch at each hand—she hits the switch to deliver her character's (the bunny) line. The play was followed by a reception for families and guests.

Please call Linda Sliwoski, ext. 210 for information about openings in the Developmental Day School and a tour of the program.

LacyMae's PCCD story

By: Tricia Leger



LacyMae with her parents Tricia and Ed Leger

In December 2009, we questioned our daughter's language development. LacyMae was 18 months and was not expressing any words. Her pediatrician referred us to The Professional Center for Child Development. We contacted PCCD to evaluate LacyMae to see if she met the criteria to receive Early Intervention. Upon evaluation, LacyMae was found to be eligible and accepted into the program with a speech & language delay. Cathy Jurgen, a developmental specialist sees her in our home.

During the first six months, we saw some positive changes in LacyMae's verbal expressions. At her six-month evaluation, PCCD determined that LacyMae

would benefit from continued weekly Early Intervention home visits. In September, PCCD offered the opportunity for LacyMae to begin a group experience in a 2x2 developmental play group.

LacyMae's first day of group began with Ms. Aimee and Ms. Cheryl welcoming her into the class. LacyMae was so excited about all the new toys in the classroom. She had no concerns of being left with the teachers and other preschoolers. She loved her first day and continues to enjoy each day at PCCD. Her language development has vastly improved since her first Early Intervention session with Cathy.

We are forever grateful to all of the PCCD staff who contributed to LacyMae's development. She is now able to express herself and we are so glad that we can understand her wants and needs.

We have recently attended a workshop that was put on by PCCD that would help us understand the process of filling out the paper work for Individualized Education Program (IEP) as our daughter would enter into the school system with a disability.

In October we helped out with Trot for Tots that was organized by the staff at PCCD, it was a road race that you either walked or ran a 5k. I was amazed to see the turnout of all the people that had their children in the PCCD programs or that wanted to run for a good cause.

PTP Pediatric Therapy Program

The program is available for children who could benefit from Physical, Occupational, Speech, Nutrition & Feeding and Educational Therapies from age 3 through 7 years. In small groups or on an individual basis children engage in the PCCD's successful and fun play-based therapy.

Assessments and Evaluations are available

The PTP is also the home of the popular summer group for preschool children "PCCD Summer Adventure".

Fun filled and powerfully effective groups are ongoing. Small groups to address specific areas of need may include:

- ◆ Social Skills
- ◆ Speech
- ◆ "Play Pals" (a Saturday, enrichment experience)
- ◆ Sensory-Motor
- ◆ Nutrition & Feeding

▪ For more information please contact ▪

Kim Briggs, SLP (ext. 226)

PTP@TheProfessionalCenter.org

New Year's Greetings from Early Intervention

By: Sandy Levine, LICSW, CEIS - Early Intervention Program Director

Despite the economic downturn and the increased fees, Early Intervention continues to meet the developmental needs of infants and toddlers across the state. We are pleased that the eligibility criteria has stayed the same for this fiscal year and that we have been able to maintain a dedicated, experienced staff. Our staff represents many disciplines with a variety of expertise in child development. They are dedicated to working with you and your children in the community and at our Center. The PCCD's Regional Consultation Program of the Northeast, provides vital, additional services to children with complex care needs.

What is in store for 2011?

Preserving eligibility. Hearings will take place across Massachusetts the second week of January regarding Eligibility. The EI system is always at risk of having the criteria for services becoming more restricted. We may be calling families to help in the campaign to prevent this from happening.

Implementing Autism Legislation (ARICA). Legislation is in place as of January 1 to have insurance pay for a variety of services to children diagnosed on the Autism Spectrum. Implementation is still somewhat confusing but ultimately should go a long way toward helping families obtain services.

Introducing the Battelle—2. The Battelle will become the evaluation tool for all Early Intervention eligibility by delay beginning January 2012. We are already beginning to use the Battelle and you will see more of us using it through the year.

Continuing to offer Workshops - we have many great ones coming up in the New Year. Most of them are at our Andover site. (check out our web site)

Not eligible for EI - For those of you whose children were not eligible for Early Intervention, our Agency has a variety of programs through our Private Therapies Program and Community 2x2 groups. Call for more information.

Also, call if you are interested in obtaining more information or helping in our various endeavors.

We wish you and your family a safe, healthy, and rewarding New Year.

PCCD Board of Directors

Officers

Mr. John Roberts, Chairman
Ms. Susan Moloney, Vice Chair
Mr. John DeCourcy, Treasurer
Mr. Peter Daniels, Clerk

Members

Ms. Veryl Anderson,
Executive Dir.
Ms. Kelly Gilbert
Mr. Brian Latina
Mr. Matthew Remis
Mr. Kent Wanzek
Mr. John Yeaton

Thank you

PCCD Schedule of Events...

Ongoing Parent groups—Complex Health Care Needs,
- Call the Center for more information.

Ongoing Two-By-Two/Three, Day School and Agency tours

April 29th Swing Into Spring Gala—Andover Country Club

Oct. 2nd 19th Annual Trot for Special Tots (5 K road race and walk)

PCCD Wish List *Donating from the "Wish List" is easy. Just Call the Center,*

- ◆ *Riding or walk behind lawn mower with grass collection system (new or gently used)*
- ◆ *Gas or Electric hedge trimmer, lawn trimmer and/or gas powered back pack leaf blower*
- ◆ *Items for our silent auction and Road Race prizes - Typewriter (electric)*
- ◆ *Art Supplies, Bubbles and Play Doh - Batteries AA, C, D, 9 volt*
- ◆ *Printing of agency newsletter or brochures - New or used (in good condition) car seats*
- ◆ *Gift certificates (BJ's and Market Basket, Toys' R Us, gas cards)*

Thank you to all who have donated to The PCCD Wish List.

We appreciate all you do!

New "Developments"

By: Julianne Bloise, Director of Development

As 2011 begins, I would like to thank all of you for your generosity in 2010. With our costs continuing to climb, and reimbursements rates still frozen, your donations are extremely important. It is through events such as our **Swing into Spring Gala**, **Trot for Special Tots** and **Annual Appeal** that we are able to close the gap between income and expenses. We had record turnout at Gala 2010 and Trot 2010 and, as a result, we were able to raise much-needed money to continue helping the 1,400 families we serve annually. Our **Annual Appeal** is ongoing and contributions are tax-deductible. All of us at The Professional Center are grateful to those who have already donated.

If you did not receive an appeal in the mail, please contact Julie in the Development Office at ext. 222.

Close to 400 people were a part of our **18th Annual Trot for Special Tots** on Sunday, Oct. 3rd. The cool, sunny fall day was perfect for the festivities, which included a cookout, costume parade and door prizes. Thank you to all the volunteers, including students from **Andover, Central Catholic, Concord Academy, Reading and Wilmington High Schools**.

Thank you to the following sponsors:

Gold

Service Club of Andover
UNICO Merrimack Valley
Bloise Family
LaPlume & Sons Printing Inc.
Vanguard Charitable Endowment
Vogel Vending

Silver

RiverBank
US Bank

Bronze

Andover Liquors
Andover Pediatrics
Bill & Veryl Anderson
Boston Private Bank & Trust Company
Daniels Family
Forever Green Landscape
Georgetown Savings Bank
IAM Orthotics & Prosthetics Inc.
Lopez, Chaff and Wiesman Associates
National Tile Distributors Inc.
New England Community Acupuncture

Plan Base
RC LaFond Insurance Agency
Remis Family
Ride-Away Handicap Equipment Corp.
Smith & Nephew Endoscopy

Food & Service

American Red Cross
Borrelli's Italian Deli
Brigham's North Andover
Conlon Office Products
DJ Marty Cormier
Fantini Baking Company
Heav'nly Donuts Methuen
Mann Orchards
Optimum Sportswear
Pepsi Bottling, Wilmington MA
Poland Spring
Sondra Longo Photography
Stonyfield Farm Yogurt
Vicor Corp.
Whole Foods Market

**Save the Date! The Annual
Swing into Spring Gala is
Friday, April 29, 2011.
See you there!**

Department of Public Health Early Intervention Annual Fee

Three and a half months ago DPH implemented changes to the Early Intervention Annual Fee. Effective September 15th an increase in fee amounts at all levels was instituted. Families are now required to provide proof of income and complete an Income Attestation Form. In early September, the Parent Leadership Project hosted an information call for parent contacts and parent liaisons on the changes to the Annual Fee.

- ◆ The conference call and Power-Point presentation are available to families at www.eiplp.org/documents/feeconferencecall.wmv.
- ◆ Additional information regarding the Annual Fee may be found on the Massachusetts DPH website at www.mass.gov/dph/earlyintervention.
- ◆ Questions regarding the Early Intervention Annual Fee may be directed to Mary Dennehy-Colorusso at 978-851-7261 x4016 (TTY 978-851-0829).

Family Involvement in Early

Intervention

Parent Leadership Project 1-877-35-EI-PLP

The Project's main goal is to promote lifetime advocacy and leadership skills, and work to develop an informed parent constituency which will, in turn, encourage Early Intervention services to be increasingly family centered. As a parent initiated and parent driven endeavor, the PLP continually seeks family input regarding the needs of EI families in our state. Identifying these needs helps determine future direction for the project as well as the EI system as a whole.

The Parent Perspective is a free newsletter written by and for parents distributed 8 times a year. Parents are invited to submit articles. The Professional Center frequently submits articles and information to this publication. Call the PLP to receive the newsletter.

Become more involved...

Join a statewide committee or task group with The Massachusetts Interagency Coordinating Council (ICC).



You can make The Professional Center for Child Development even better...

~ Join the Friends of The Center ~

~ Volunteer for an event ~

Family Rights in

Early Intervention Services

In your intake packet, each family received a brochure on family rights in EI. If you would like another copy, please ask your service coordinator.

If more information is needed, The Department of Public Health has written standards for the operation of Early Intervention Programs and written procedures that protect your rights. You may get a copy of these at the PCCD or by going on the DPH web site.

Early Intervention services in Massachusetts are provided in compliance with federal regulations.

This newsletter is designed to share information with families colleagues, the community, and contributors. The newsletter is coordinated by Ellen Waddill (the PCCD Parent Liaison) and is edited by Ellen, Emily Knapp, those who write articles & other PCCD staff.

To contribute articles, stories, poetry, etc.,

please call Ellen at ext. 217 or Ellen@TheProfessionalcenter.org

Family TIES of Massachusetts

(TIES—Together In Enhancing Support)

A statewide information and support network for families of children with disabilities, special health care needs, or chronic illness.

MassFamilyTies.org

1-800-905-TIES

"Friends of The Center"

Enclosed is my tax deductible gift to help The PCCD provide services and support for families and children as has been done for three decades. With your help, PCCD will expand services, develop new programs, and make facility improvements.

\$25 _____ **\$50** _____ **\$100** _____ **\$200** _____
\$500 _____ **\$** _____

Name and address of contributor (please print)

Name: _____ Address: _____



The Professional Center
for Child Development

32 Osgood Street
Andover, Massachusetts
01810

NON-PROFIT
U.S. POSTAGE
PAID
PERMIT NO.
236
ANDOVER, MA

Helping children of all
abilities achieve their full
potential for nearly 40 years

PCCD Preschool "Blog" Builds Community

By: Ellen Waddill, M.Ed. - Parent & Community Liaison

The Preschool at the Professional Center for Child Development connects with parents by blogging an ongoing chronicle of events and classroom information in a secure blog. This weblog or "blog" as it is commonly known, is a way for parents and teachers to establish a community and share what is going on in the classroom. The blog also allows parents to take a peek into their child's world. The staff suggests, reviewing pictures with students at home reinforces language and communication skills. With regular entries Ms. Sherrie & Ms. Melanie are able to post photos, text, links, articles, artwork, announcements, experiments, and recipes. Parents and PCCD staff are encouraged to join the discussion. Sherrie Espy and Melanie Shipon, Educators in the Preschool, maintain this wonderful opportunity for social networking in the PCCD Preschool.

PCCD



Preschool

PCCD Preschool— Mornings

Monday, Wednesday and Friday

open enrollment for children ages 3 and 4 years.

♦ The Two by Three Preschool is an extension of our popular Two-by-Two Program. It is a highly individualized program for preschool children of all abilities. Children will be coached on self-regulation, communication and social skills in a fun, play based curriculum. Students who attend the PCCD Developmental Day School are also active participants.

- ♦ Visit the PCCD's web page—updated each week
- ♦ Join the PCCD on Facebook