



**Greater Lawrence Community Action Council,
Inc.**

Fiscal Lead Agency

305 Essex St. Lawrence, MA 01840



**Michael B. Christensen Community & Family Support Center (CFSC)
CFSC February 2012 Lawrence Newsletter**

Where resources are only a step away!

Quote of the Month: "No one has yet fully realized the wealth of sympathy, kindness and generosity hidden in the soul of a child. The effort of every true education should be to unlock that treasure." ~Emma Goldman

Great News!



The Michael B. Christensen Community & Family Support Center's Project FOCUS program recently received a Full Service Community Schools Grant of \$486,000 from the U.S. Department of Education. Project FOCUS (Families in Our Community United for Success) works with the South Lawrence East Middle School, and is in its second year of a 5 year grant, which seeks to increase student academic achievement by offering additional academics, language, health care, and social services to children and their families. Project FOCUS offers membership and transportation to the Boys & Girls Club, programs in violence prevention and healthy relationships, classes in nutrition and gardening and at Micro World Technology, one-on-one mentoring, ESL classes, and community and parent engagement activities. Congratulations Project FOCUS staff: Pam Marchand, Coordinator, Carmen Lopez, Parent Outreach Specialist, and Yolanda Rosa, Case Management.



Inside this Issue:

News= page 1

CFSC program updates= page 2

Upcoming events and info for parents= page 3

Workshops, trainings and announcements= page 4

Michael B. Christensen CFSC Program Updates!

Early Reading First (ERF):

In January 2012, 165 children were enrolled at the 3 ERF sites: YMCA and YWCA in Lawrence and YMCA in Methuen.

We focus on preparing children in preschool with the necessary language, cognitive and early reading skills to succeed in kindergarten and throughout their academic life.



Family Preservation and Support Program:

We are currently working with 14 families and are at full capacity.

We work with families with children up to age 18, and provide services such as home management skills counseling, financial management training, and comprehensive case management.

We help develop working service plans to help families reach short-term and long-term goals.



Parent-Child Home Program (PCHP):

We are currently working with 32 families and are conducting home visits regularly.

PCHP helps parents understand the importance of reading, talking, and playing with their young children (18 months to 3 years).

Children receive free toys and books to prepare them for preschool!



Upcoming Events for Michael B. Christensen CFSC

For more information about these events, please call the office at
978-681-4996 or 978-681-4985.



GLCPC Council Meeting:

Thursday, Feb. 9, 2012

305 Essex St. Lawrence, MA 4th floor

9:30-11:00am

Love and Logic Training: *Handling Misbehavior w/out Breaking a Sweat & Teaching Kids to Listen the First Time*

Saturday, Feb. 11, 2012

305 Essex St. Lawrence, MA 4th floor

8:00am-1:00pm

Please sign up with Erin Mulcahy at the ERF office

(978) 620-4725

Information for Our Parents!!!

GLCPC Family Network

190 Hampshire St. Lawrence, MA

Contact Mercedes Rondon to register for playgroups or workshops (978)
722-2505

Playgroups: Wednesdays from 10:30 am - 12:30 pm

Workshops: *Potty Training* (2/1/12) 10:30am-12:30pm, *Home Safety*
(2/8/12) 10:30am-12:30pm, *Biting* (2/15/12) 10:30am-12:30pm, *Infant and
Child CPR and First Aid Class* (2/22/12) 9:00am-5:00pm

Save the Date for State House Advocacy Day!

SAVE THE DATE!

**State House Advocacy Day
for**

**Early Education & Care and
School Age Programs**

♥ **Tuesday, February 14, 2012** ♥

Great Hall

Massachusetts State House, Boston

9:00 – 10:00 a.m. Registration and breakfast

10:00 a.m. Program

11:15 a.m. Meetings with Legislators

Join your colleagues from across the Commonwealth at the State House to ask legislators for their continued support for high-quality early education and care and school-age services and the children and families we serve.

Working together, we can make a difference!

To find out who your state legislators are, call or 1-800-462-VOTE, or go to the following website: www.wheredoivotema.com.

Workshops and Trainings for Families

Managing your Diabetes: Join us for a conversation at Lawrence General Hospital

1 General St. Lawrence, MA

*To register, contact Nancy Masys
(978) 683-400 x 2426*

9:30am-12:30pm, S1 conference room, Feb. 2, 9, 16

5:30pm-8:00pm, Stevens classroom, Feb. 2, 9, 16



Suicide Prevention Training for Gatekeepers of Older Adults:

The Samaritans of Merrimack Valley is offering a free, Department of Public Health-funded training for "gatekeepers" to reduce the incidence of suicide among people ages 55 and older in the Merrimack Valley and beyond.

Tuesday, Feb. 7, 2012 (8:30am-4:30pm)

Whittier Pavilion, 76 Summer St. Haverhill, MA

For more information or to sign up for the training, contact:

Announcements!!!

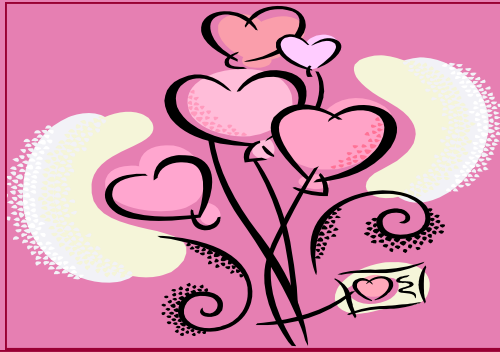
The Heart Depot

Come to Lawrence General Hospital's Main Lobby

Friday, February 3 from 9am-3pm

- Free cholesterol, blood sugar and blood pressure screenings
 - Heart healthy snacks, raffles and give aways!
 - "Ask a Pharmacist" station
- Financial counselor assistance with health insurance
 - Interpreters available





CFSC's Mission

The Community and Family Support Center strives to unite key organizations and individuals through collaboration and are committed to ensuring that all children and families have access to high quality education and care.

Community and Family Support Center funded by: Massachusetts Department of Early Education and Care (EEC)

CFSC Staff:

Susan Mitchell, Co-Director

Maureen Pasek, Co-Director

Erin Mulcahy, CFSC

Elisa Rivera, SVC, PEP, PAP & FP

Yolanda Rosa, FOCUS & FP

Alejita Melendez, PAP & FP

Pam Marchand, FOCUS

Carmen Lopez, FOCUS

Tina DeLeon, ERF, PCHP

Soraya Tapia, PCHP

Luz Montijo, GLCPC, & R3P

Emily Hoffman, Pathways to Family Success

Dianne Russell, ERF

Mary Ann Fleming, ERF

Contactors: Mercedes Rondon, GLCPCFN & Manuela Su, GLCPCFN