



Greater Lawrence Community Action Council, Inc.

Fiscal Lead Agency

305 Essex St. Lawrence, MA 01840



Michael B. Christensen Community & Family Support Center (CFSC)

CFSC February 2012 Methuen Newsletter

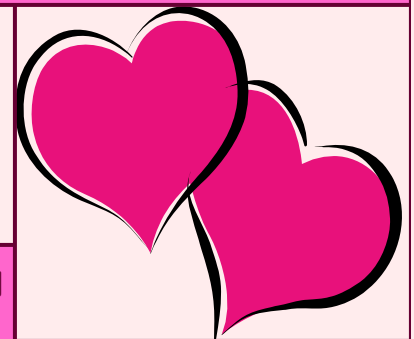
Where resources are only a step away!

Quote of the Month: "No one has yet fully realized the wealth of sympathy, kindness and generosity hidden in the soul of a child. The effort of every true education should be to unlock that treasure." ~Emma Goldman

Upcoming Events at the Nevins Memorial Library!

305 Broadway Methuen, MA 01844

(978) 686-4080



Babies and Books (up to 2 yrs old): Early literacy skills will be promoted through rhymes, songs, and stories read aloud. No registration required. Contact Children's Department 978-686-4080 ext. 26

Friday, Feb. 3 & 10 2012 at 11-12pm

Saturday, Feb. 11, 2012 at 10-11am



Storytime for 2 yr olds: Stories, songs and fingerplays for children. Online registration preferred. Contact Children's Department 978-686-4080 ext. 26

Wednesday, Feb. 1 & 8, 2012 at 10-10:30am

Tuesday, Feb. 7, 2012 at 10-10:30am

Inside this Issue:

Upcoming events at the Nevins Memorial Library= page 1-2

Upcoming events at CFSC= page 2

CFSC program updates= page 3

Info for parents, workshops and trainings= page 4

More events and announcements= page 5

Events at Nevins Memorial Library continued

Storytime for 3-5 yrs

olds: Come join us for a variety of stories, songs, movement activities and a simple craft. Online registration preferred. Contact Children's Department 978-686-4080 ext. 26

Wed. Feb 1 & 8, 2012 at 11-11:45am

Tues. Feb. 7, 2012 at 6:30-7:15pm

Friday, Feb. 10, 2012 at 10-10:45am

Play Get Creative Bingo

(K-6th): Pick up your sheet at the Children's Department desk. Complete enough activities to score Bingo. If you choose to do an art activity, we encourage you to bring it in to hang up in our art gallery. Turn your completed bingo sheet with your contact information to the Children's Desk by February 25, 2012 to be entered into a random drawing for our Artsy Basket!

Terrific Tuesday (K-3):

Join us for some stories, games and a craft activity! This month's program theme is: Mythological Beasts. Participants are invited to exhibit their piece of art in a special program called "Day at the Art Museum" on Saturday, March 24, 2012.

Tuesday, Feb. 21, 2012 at 6:30-7:15pm



Upcoming Events for Michael B. Christensen CFSC

For more information about these events, please call the office at 978-681-4996 or 978-681-4985.

GLCPC Council Meeting:

Thursday, Feb. 9, 2012

305 Essex St. Lawrence, MA 4th floor

9:30-11:00am

Love and Logic Training: Handling Misbehavior w/out Breaking a Sweat & Teaching Kids to Listen the First Time

Saturday, Feb. 11, 2012

305 Essex St. Lawrence, MA 4th floor

8:00am-1:00pm

Please sign up with Erin Mulcahy at the ERF office

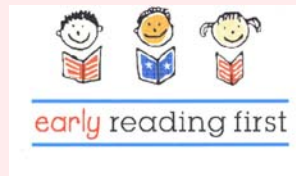
(978) 620-4725

Michael B. Christensen CFSC Program Updates!

Early Reading First (ERF):

In January 2012, 165 children were enrolled at the 3 ERF sites: YMCA and YWCA in Lawrence and YMCA in Methuen.

We focus on preparing children in preschool with the necessary language, cognitive and early reading skills to succeed in kindergarten and throughout their academic life.



Family Preservation and Support Program:

We are currently working with 14 families and are at full capacity.

We work with families with children up to age 18, and provide services such as home management skills counseling, financial management training, and comprehensive case management.

We help develop working service plans to help families reach short-term and long-term goals.



Parent-Child Home Program (PCHP):

We are currently working with 32 families and are conducting home visits regularly.

We help parents understand the importance of reading, talking, and playing with their young children (18 months to 3 years).

Children receive free toys and books to prepare them for preschool!



Save the Date for State House Advocacy Day!

SAVE THE DATE!

**State House Advocacy Day
for
Early Education & Care and
School Age Programs**

♥ Tuesday, February 14, 2012 ♥

Great Hall

Massachusetts State House, Boston

9:00 – 10:00 a.m. Registration and breakfast

10:00 a.m. Program

11:15 a.m. Meetings with Legislators

Join your colleagues from across the Commonwealth at the State House to ask legislators for their continued support for high-quality early education and care and school-age services and the children and families we serve.

Working together, we can make a difference!

To find out who your state legislators are, call or 1-800-462-VOTE, or go to the following website: www.wheredoivotema.com.

Information for Our Parents!!!

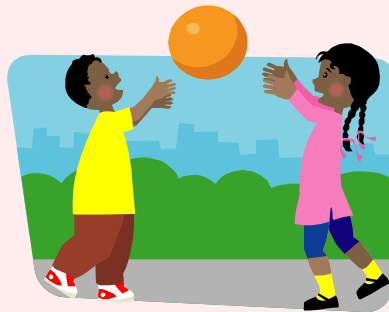
GLCPC Family Network

190 Hampshire St. Lawrence, MA

Contact Mercedes Rondon to register for playgroups or workshops (978)
722-2505

Playgroups: In Methuen on Mondays from 10:30 am - 12:30 pm

Workshops: *Potty Training* (2/1/12) 10:30am-12:30pm, *Home Safety* (2/8/12) 10:30am-12:30pm, *Biting* (2/15/12) 10:30am-12:30pm, *Infant and Child CPR and First Aid Class* (2/22/12) 9:00am-5:00pm



Workshops and Trainings for Families

Managing your Diabetes: Join us for a conversation at Lawrence General Hospital

1 General St. Lawrence, MA

*To register, contact Nancy Masys
(978) 683-400 x 2426*

9:30am-12:30pm, S1 conference room, Feb. 2, 9, 16

5:30pm-8:00pm, Stevens classroom, Feb. 2, 9, 16

Suicide Prevention Training for Gatekeepers of Older Adults:

The Samaritans of Merrimack Valley is offering a free, Department of Public Health-funded training for "gatekeepers" to reduce the incidence of suicide among people ages 55 and older in the Merrimack Valley and beyond.

Tuesday, Feb. 7, 2012 (8:30am-4:30pm)

Whittier Pavilion, 76 Summer St. Haverhill, MA

For more information or to sign up for the training, contact:

Monica Corcoran (978) 556-6201

More events in your community!

The Children's Center in Methuen has a new Basketball Team!

The older school age children have started a basketball team and are looking for other school age programs to play with on Thursday, February 23 and Friday, February 24.



The Children's Center can provide transportation if needed.

For more information, call (978) 685-6469 or e-mail ekenedy@childrenscenterfumc.com

A great opportunity for the children to meet and play with other children in the community!

Announcements!!!

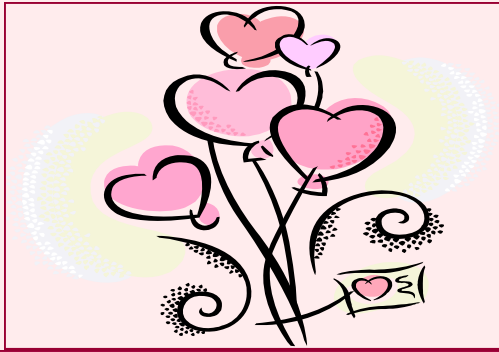
The Heart Depot

Come to Lawrence General Hospital's Main Lobby

Friday, February 3 from 9am-3pm

- Free cholesterol, blood sugar and blood pressure screenings
- Heart healthy snacks, raffles and give aways!
- "Ask a Pharmacist" station
- Financial counselor assistance with health insurance
- Interpreters available





CFSC's Mission

The Community and Family Support Center strives to unite key organizations and individuals through collaboration and are committed to ensuring that all children and families have access to high quality education and care.

Community and Family Support Center funded by: Massachusetts Department of Early Education and Care (EEC)

CFSC Staff:

Susan Mitchell, Co-Director

Maureen Pasek, Co-Director

Erin Mulcahy, CFSC

Elisa Rivera, SVC, PEP, PAP & FP

Yolanda Rosa, FOCUS & FP

Alejita Melendez, PAP & FP

Pam Marchand, FOCUS

Carmen Lopez, FOCUS

Tina DeLeon, ERF, PCHP

Soraya Tapia, PCHP

Luz Montijo, GLCPC, & R3P

Emily Hoffman, Pathways to Family Success

Dianne Russell, ERF

Mary Ann Fleming, ERF

Contactors: Mercedes Rondon, GLCPCFN & Manuela Su, GLCPCFN