

"Do you know of a gay or gay friendly doctor on the North Shore?"

"I was told that I didn't need a pap smear because I was a lesbian."

"When I told my doctor I thought I was transgender, he said he couldn't help me, and didn't point me anywhere where I might find help."

"I'd rather quit drinking myself than go to another detox where the other patients call me 'faggot' and the staff just ignore it."

"When I was in the emergency room, the doctor wouldn't even look at me when he was talking. He didn't introduce himself to me, but was friendly with the other patients. I knew it was because he was uncomfortable with my gender expression. I'll never go back there again."



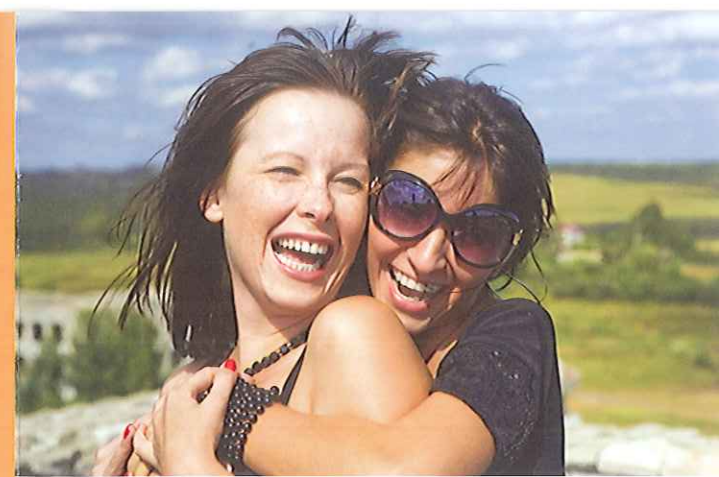
**BECAUSE OF THESE REAL CONCERNS,
WE ARE WORKING TOGETHER TO
REDUCE HEALTH DISPARITIES
FOR LGBT FOLKS IN ESSEX COUNTY.
PLEASE, CONTACT US TO JOIN.**

"Growing up, it wasn't even safe for me to be out. I had to wait until my 30's to come out. I've suffered from Depression and Anxiety all my life, partly related to my not being allowed to truly be who I am."



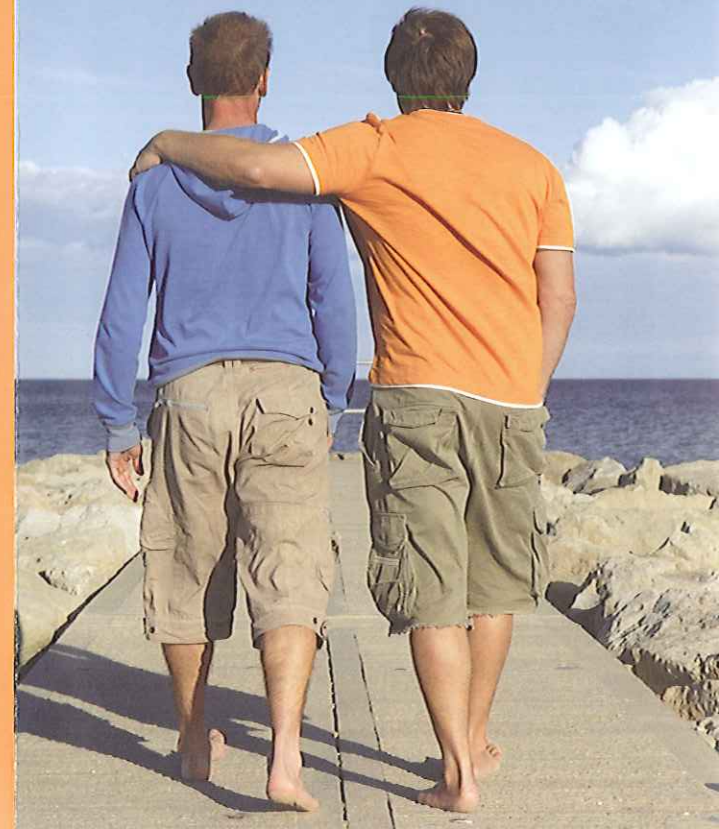
PRISMHEALTH.ORG
156 Cabot Street
Beverly MA 01915
978.927.4506 x219

Prism Network is funded by private donations
and the North Shore Community Health Network



PRISM
LGBT HEALTH NETWORK

DEDICATED TO THE HEALTH & WELL-BEING OF
LESBIAN, GAY, BISEXUAL, & TRANSGENDER
INDIVIDUALS & FAMILIES LIVING ON
THE NORTH SHORE & IN ESSEX COUNTY



LGBT PEOPLE HAVE UNIQUE HEALTH NEEDS



According to the CDC, "there is a need for culturally competent medical care and prevention services that are specific to this population. Social inequality is often associated with poorer health status, and sexual orientation has been associated with multiple health threats."

Center for Disease Control, LGBT Health

"Lesbian, gay, bisexual, transgender, and questioning youth are up to 4 times more likely to attempt suicide than their heterosexual peers."

Massachusetts 2006 Youth Risk Survey

"Tobacco use among the LGBT population is roughly double that of the heterosexual population."

American Lung Association

"Some studies have found that approximately 30 percent of all lesbians have an alcohol abuse problem."

US Department of Health & Human Services

According to a **2005 Harris Poll**, many lesbians reported that they "delayed obtaining health care because they were concerned they would be discriminated against."

According to the **Healthy People 2010 Companion for LGBT Health**, gay men and lesbian women are at increased risk for certain cancers (lung, cervical, breast, and anal cancer), due to a higher prevalence of smoking, being overweight, and inadequate risk assessment and screening by providers.

"Almost half of the transgender participants in a Worcester County community needs assessment stated that health services were not available or that they had experienced discrimination due to their gender identity."

Voices of LGBT People in Worcester County

PRISM NETWORK IS ADDRESSING THESE NEEDS

Prism Network is an alliance of mental health providers, doctors, programs, social services, and other community organizations that serve LGBT people in Essex County.

Our mission is to reduce health disparities for LGBT individuals and families by providing opportunities for providers to network with local programs and resources that serve LGBT. These include youth services, mental health, domestic violence services, trauma support, HIV/STD prevention, specialized medical care, and social & support groups.

MEMBERSHIP IS FREE:

Some members work with LGBT primarily, while others just want to ensure that their services are LGBT inclusive, welcoming, culturally competent and comprehensive.

COMMITMENT:

Active members must attend at least one Prism Network meeting per year. Meetings are held every other month, and are a great opportunity to get personally connected with other providers and programs that work with the LGBT community in Essex County.

BENEFITS:

- Listing in the Prism Resource Guide, both in print and online, made available to clients and providers
- Monthly Prism e-newsletter
- Prism sponsored trainings specific to LGBT health needs, including accredited mental health and medical workshops
- Increased referral base and referral resources