



Greater Lawrence Community Action Council, Inc.
Fiscal Lead Agency
305 Essex St. Lawrence, MA 01840



Michael B. Christensen Community & Family Support Center (CFSC)
CFSC January 2012 Methuen Newsletter

Where resources are only a step away!

Quote of the Month! The best and most beautiful things in the world cannot be seen or even touched. They must be felt with the heart. Wishing you happiness. ~Helen Keller

Upcoming Events at the Nevins Memorial Library!
305 Broadway Methuen, MA 01844
(978) 686-4080

Adult Scrabble Club: Attention Wordsmiths. Join us for a fun night of Scrabble. all competition levels welcome. Refreshments will be served. For more information, please contact Fran Magro at (978) 686-4080, Ext. 19 or email fmagro@mvlc.org.

Wednesday, January 4, 2012 from 6:30 PM to 8:30 PM

Traveling in China with Richard Ferland: Richard Ferland, Professional Photographer and tour operator for China travel, has lived in China and organizes groups who would like to visit China. Richard will talk about what to expect on your visit including, weather, money, language, what to see and much more. He will end with a photographic slideshow and answer any questions you may have. Please sign up for this program by stopping by or calling the Reference Department at 978-686-4080 x13. Free to public.

Thursday, January 10, 2012 at 7 PM

Downloading Library eBooks to your Nook w/Kirsten Underwood: Did you just get a Nook and have questions on how to borrow library eBooks? Let Kirsten Underwood take some of the mystery out of borrowing an eBook from the library and reading it on your Nook. Watch a demonstration of how to download and transfer an eBook on to the Nook. This program is a BASIC help program.

Friday, January 12, 2012 at 7 PM

Project Giving Tree: During this holiday season we will be collecting blankets, socks and first aid items to donate to Lazarus House. The selections for this year's giving tree were made by the girls attending our American Girl Book club. If you attend a Children's program or visit the library please consider making a donation to the Children's Department's annual charitable project. You may bring your donations to the Children's Department and place them in the boxes under the tree. Items will be accepted until January 30, 2012. Thanks for your support! Please register for these programs online on our web site www.nevinslibrary.org or call the Children's Department at 978-686-4080 ext. 26.

Runs from November 13, 2011 to January 30, 2012.



Inside this Issue:

- Page 1—Upcoming Events in the Nevins Memorial Library
- Page 2—Announcements and share with your families
- Page 3—Upcoming Events in Methuen
- Page 4— Information on the Community & Family Support Center



Announcements!
Share with your families!



MSPCC Healthy Families: Services provided in Andover, North Andover, Lawrence, Methuen, and Middleton

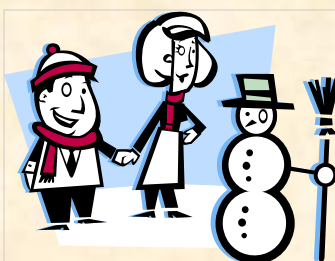
Home Visiting Program for Teen parents under age 21 with their first baby includes:

Parenting Education (Parenting Groups), Play Groups, Community Connect, Social Activities.

Parents older than 21 years old with more than one child are offered: Home visit program and case management

Parent Child Home Program: for parents and children between the ages of 18 months and three years old who live in Andover, North Andover, Lawrence, and Methuen.

- A home visitor comes to your home for thirty minutes twice a week. At these visits, the home visitor demonstrates book reading using Dialogic Reading and also demonstrates the use of a toy to enhance language and literacy in the home. Parents receive the book and toy to use with activities to help enhance literacy.
- The goal of the program is to ensure that parents as their child's first teachers experience the joy and value of reading and talking to their children using a play format to give the children a head start of being ready to learn when entering school.
- For more information, please call: **Faustina De Leon (978) 681-4985**



Extra Information for Our Parents!

On-The-Go Activities to do with your infant or toddler that promote language and literacy! (provided by Washington Learning systems. For more information, the website is <http://www.wlearning.com/>).

Activity: Talking About Things Outside

Ask your child questions about things he/she sees out the car window.

What color is it?

What shape is it?

How do you think it feels?

Do you think it has a smell?

To help your child succeed, you can:

Talk about what color and shape things are and how they feel and smell

Ask your child questions about things your child is really interested in

Ask yes/no questions (are those snowflakes on the windshield?)

To make it more of a challenge, you can:

Encourage your child to describe things with more than one word

Describe something you are passing by and see if your child can find it

Have your child describe something for you and see if you can find it



More events in your community!

Health & Wellness

Diabetes Prevention Program at the Merrimack Valley YMCA 40 Lawrence Street Lawrence, MA 01840

Monday, January 2, 2012 at 11 AM

Monday, January 9, 2012 at 11 AM

Monday, January 16, 2012 at 11 AM

Monday, January 23, 2012 at 11 AM

Monday, January 30, 2012 at 11 AM

Cofe con Leche: Conversions & Support for Living with MS call 1-800-344-4867 for location
Tuesday, January 10, 2012 from 2 to 3:30 PM

Suicide Prevention Training for Gatekeepers of Older Adults at Family Service, Inc. 430 North Canal St. Lawrence, MA 01840

Tuesday, January 10, 2012 from 8:30 AM to 4:30 PM

Methuen Public Schools Speech Screenings

Methuen Public Schools will again be offering monthly speech-language screenings for children, ages 2.9 to 5 years of age, whose families are residents of Methuen. The screenings will be conducted by certified Speech-Language Pathologists and held within the school district at two grammar school locations, alternating between the third/fourth Thursday and Friday of the month. For parents concerned about their child's speech-language development, appointments for screenings can be made by calling Viki Brown, Special Education Administrator-Preschool, at (978) 722-6000, ext. 1128. No walk-in appointments will be accepted. A speech-language screening by a speech-language pathologist is a wonderful first step if you have any concerns about your child's communication skills. The screenings will be held on the following dates:

Thursday, January 27, 2012

Thursday, February 16, 2011

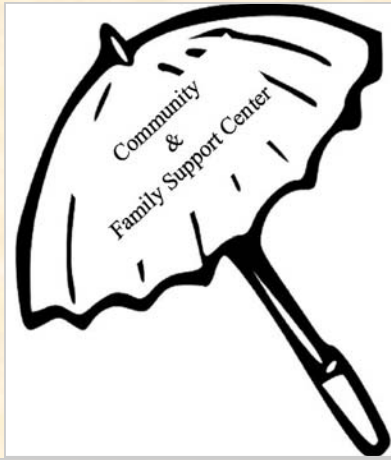
Friday, March 23, 2012

Thursday, April 26, 2012

Friday, May 25, 2012

GLCPC Council Meeting

Thursday, January 12, 2012 at 9:30 AM at GLCAC Inc. 4th floor



CFSC's Mission

The Community and Family Support Center strives to unite key organizations and individuals through collaboration and are committed to ensuring that all children and families have access to high quality education and care.

Community and Family Support Center funded by: Massachusetts Department of Early Education and Care (EEC)

CFSC Staff

Susan Mitchell, Co-Director

Maureen Pasek, Co-Director

Erin Mulcahy, CFSC

Elisa Rivera, SVC, PEP, PAP & FP

Alejita Melendez, PAP & FP

Pam Marchand, FOCUS

Carmen Lopez, FOCUS

Tina DeLeon, ERF, PCHP

Soraya Tapia, PCHP

Luz Montijo, GLCPC, & R3P

Emily Hoffman, Pathways to Family Success

Mercedes Rondon, GLCPCFN

Manuela Su, GLCPCFN

Dianne Russell, ERF

Mary Ann Fleming, ERF

